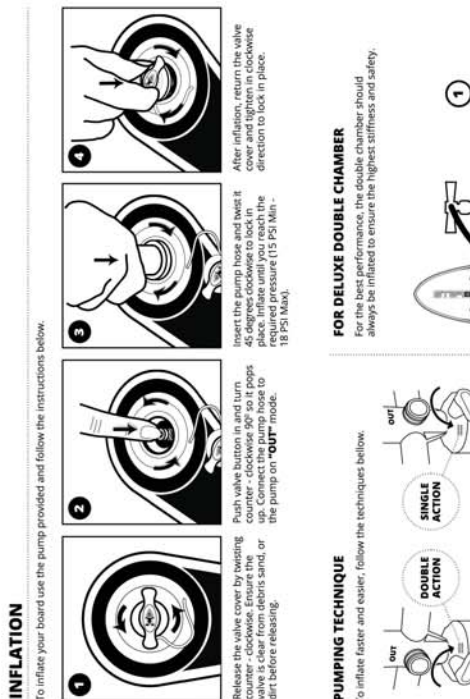
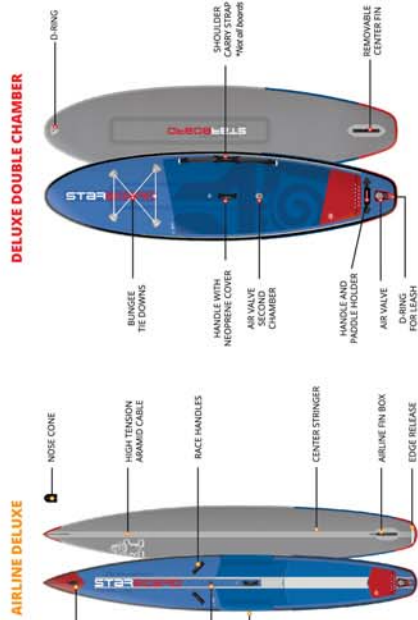
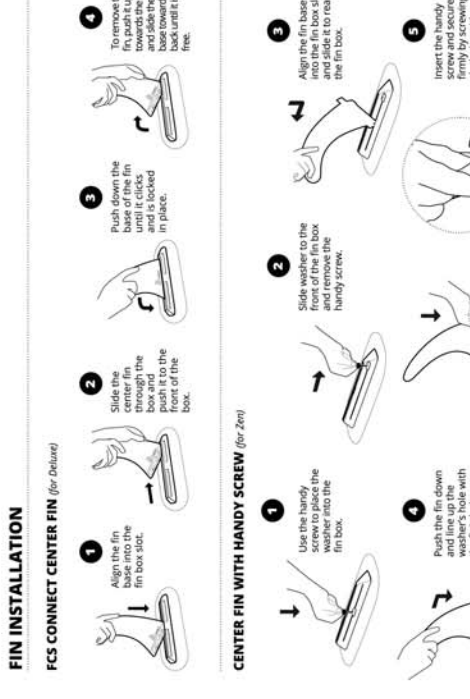
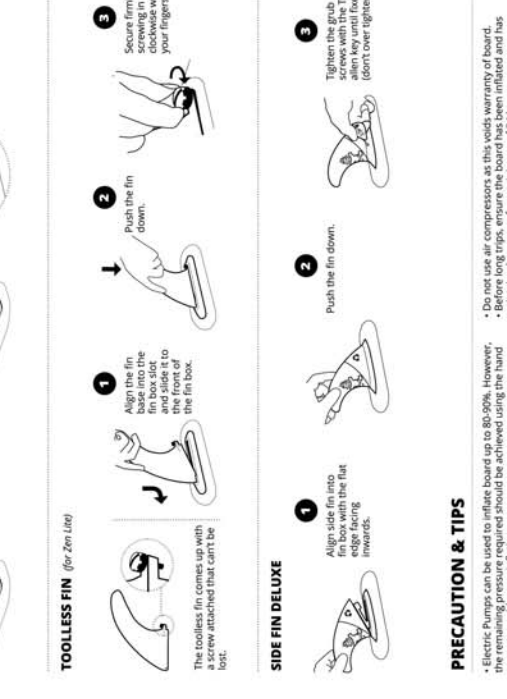
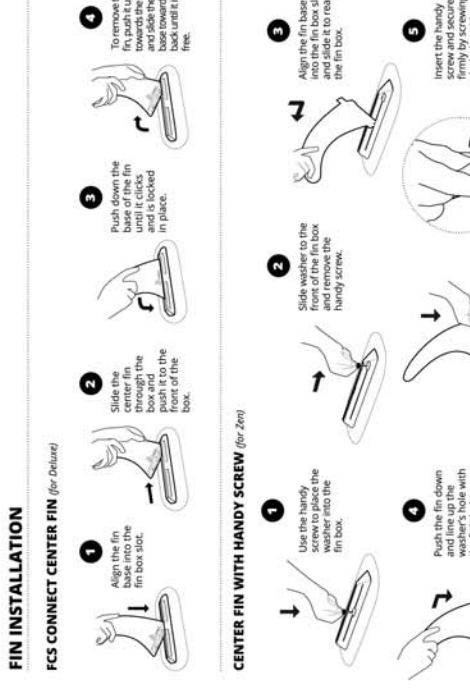
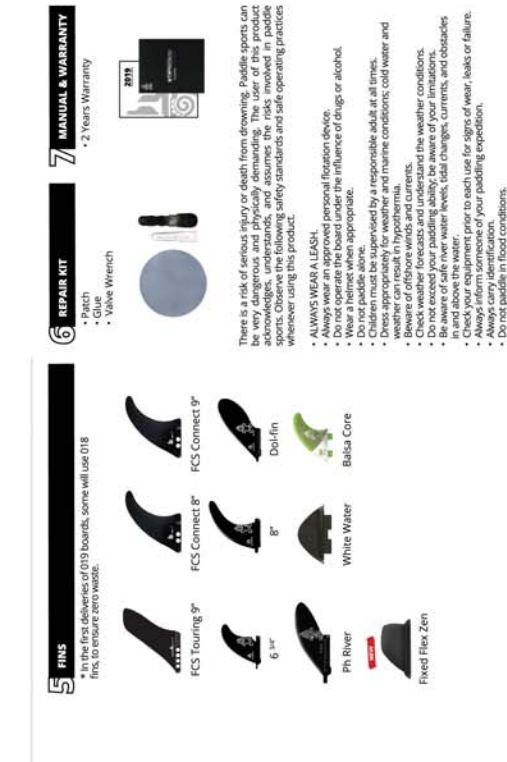
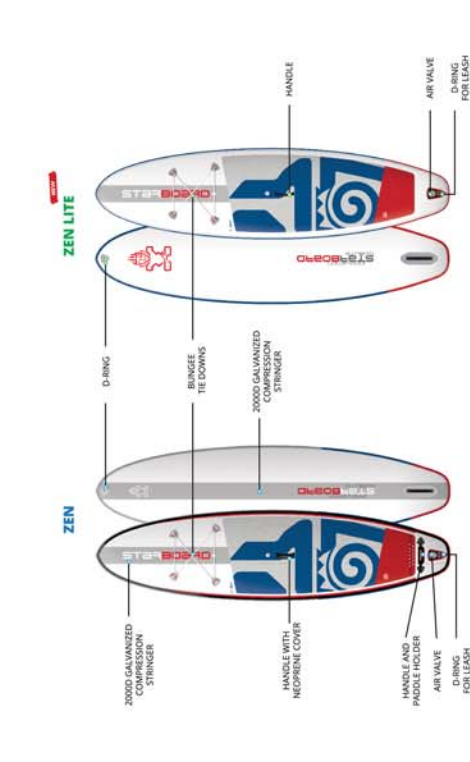
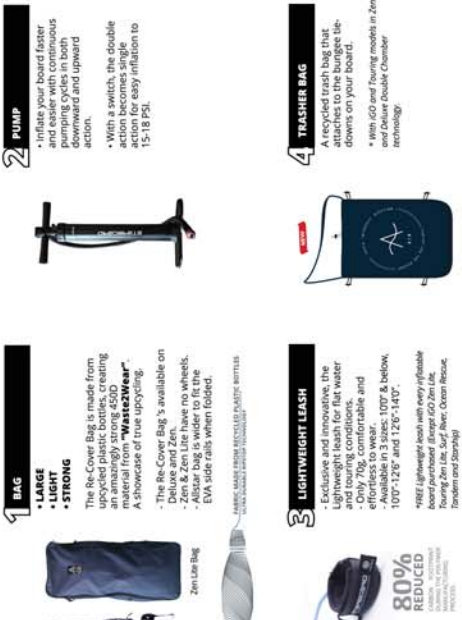


INFLATABLE BOARD



INFLATABLE BOARDS SUPPLIED WITH



HOW TO PACK THE INFLATABLE BOARD

PART I PACK THE BOARD INTO THE BOARD BAG

- 1 Release air.
- 2 Start to fold from the nose of the board.
- 3 Continue folding to the tail of the board.
- 4 Each fold should be approximately as long as the width of your boards (fin box).
- 5 The final fold should have completely on top of the other folds.
- 6 Cover the fins with the fin protectors.
- 7 Place the board in the bag with the fins on top.
- 8 Secure your board with the compression belt.

PART II PACK THE EQUIPMENT

- 9 Place the pump on the side of the board.
- 10 Keep small equipment in the mesh pocket.
- 11 Zip shut with zippers.
- 12 Connect the compression belt equipment in the mesh pocket on the zipper.

Warning: Boards may deflate over time (up to 4 PSI in 7 days), be sure to check that your board is fully inflated before paddling. ALWAYS WEAR A LEASH.

- Q: How much air should I pump into my board, and how long does it take to inflate?
 A: The recommended pressure is 15-18PSI, any higher you risk over inflating and damage. Depending on the size of your board it can take anywhere from 3-6 min.
 Q: How long should I leave the board inflated?
 A: The air is releasing as the valve spring pin has been left in the deflating position. Simply push down and turn the pin until it lifts up into the inflation position and stops air from releasing, continue to inflate the board until up to pressure.
 Q: Do NOT over tighten the screws. Only tighten until the fins feel snug and secure in the box.

MAINTENANCE TIPS

<p>1 EASY CLEANING Clean the board after use with fresh water and mild soap.</p>	<p>2 KEEP IT DRY Dry the board off after use and store it in a cool, dry place to prevent mildew and mold damage.</p>
<p>3 AVOID DIRECT SUNLIGHT When the board is inflated, avoid direct sunlight, and deflate it to at least 10PSI.</p>	<p>4 STORE AT ROOM TEMPERATURE Store the board at room temperature and humidity.</p>
<p>5 DEFLATING BEFORE STORING Releasing a few PSI just in case your board is over inflated could damage the soles of the board.</p>	<p>6 USE IT FREQUENTLY Long-term storage can cause glue bonds to drain/die.</p>
<p>7 BE CAREFUL NOT TO USE COMPRESSOR Air compressors can damage your board and void the warranty.</p>	<p>8 NO DRAGGING Sharp debris can puncture your board, so don't drag it.</p>

HOW TO TIGHTEN THE VALVE

If you notice air seems to be leaking out the side of the valve fitting, please follow these steps.

- SUPPLIES REQUIRED**
- 1 Deflate the board.
 - 2 Grip the wrench to the valve.
 - 3 Turn it clockwise to tighten the valve.

- Q: Can I leave my board inflated in the sun and over night?
 A: If leaving the board inflated, it is best to remove from direct sunlight and deflate the board at least to 10PSI.
 Q: How should I clean and how should I store my board?
 A: Clean the board with fresh water and mild soap. Dry the board off after use and store it in a cool, dry place to prevent mildew and mold damage.
 Q: If I puncture my board, can I repair it myself?
 A: Yes, we have a repair kit included with the board. For more information on how to repair your board, visit www.starboard-sup.com.
 Q: What is the difference between Double Chamber, Zen and Zen Light inflatable technologies?
 A: **Deluxe Double Chamber** is our new Ultra stiff technology with built in security chamber. The added chamber sits in the middle of the board and provides enough flotation for one person in case of an injury event. An Inboard rail band connects the main rail and the additional chamber. **Zen** is our latest technology, stripped back to the core essentials. Built with single layer knitted dropstitch and double rail band. New fusion technology fuses the deck and bottom PVC into a single layer, removing the need to apply glue & solvent thus reducing unnecessary weight. A 3K Carbon fiber compression band is laminated along the entire outline to control the shape and support stiffness. River and Vision models feature Deluxe reinforced technology. Both River and Vision do not include double chamber technology.

HOW TO REPAIR A CUT OR PUNCTURE IN YOUR INFLATABLE BOARD

SUPPLIES REQUIRED

- 1 HAIR DRYER
- 2 TAPE
- 3 GLUE FROM REPAIR KIT (Aquaseal® is recommended)
- 4 ACETONE OR METHYL ETHYL KETONE (M.E.K.)
- 5 SPATULA OR SPOON
- 6 BRUSH
- 7 TOWEL

- 1 **SURFACE PREPARATION**
Clean the area around the cut or puncture using acetone or M.E.K.
- 2 **PREPARING THE PATCH**
Draw the outline of the patch using the pencil (do not use the pencil for the patch itself). Cut the patch with approximately 2.5cm (1") overlap on all sides.
- 3 **PREPARING THE BOARD**
Apply tape along the outline of the patch. This will prevent the glue from seeping outside the patch area.
- 4 **APPLYING THE GLUE**
Apply glue on both the board and patch using a brush or other applicator. Spread evenly and completely over the board and patch. Let the glue dry for 5 minutes.
- 5 **APPLYING THE PATCH**
Apply the patch starting on one side and moving towards the other side. Press the patch down to trap any air bubbles.
- 6 **BONDING THE PATCH**
Use a hair dryer to gently heat the area to ensure a good bond between the patch and the board. Use a metal spatula or spoon and firm pressure to ensure a good bond and to work out any air bubbles.
- 7 **CURING THE PATCH**
Allow the glue to cure with the board uninflated for 24 hours prior to use.

Aquaseal is a new patented technology used only for All Star models. A pre-set floating cable is attached to the nose, gets under the bottom and ends at the fin box. The preset line is a bit shorter than the board so, when the board inflates, the line tightens and stiffens up the board significantly. New standing tray with built up EVA side walls increases stability and control when paddling in choppy water. Extra handles provide a better grip and stability. **Zen** is a solid winner at a lightweight, now with reinforcement plates in the standing area for a harder surface under feet. 2000D galvanized compression stringers support the deck and bottom for added stiffness, while double layer rail bands and a compression band increases the overall strength. **Zen Lite** is our latest technology, stripped back to the core essentials. Built with single layer knitted dropstitch and double rail band. New toolless fin system is quick and easy to set up.

• **ALL 2019 TECHNOLOGIES HAVE HAT WILDED BALLS.**

WWW.STAR-BOARD-SUP.COM

